



EMI Suppression Devices and EMI Services	Data Sheets	Info	Page
Automotive Suppressors : Capacitors For Alternators and Vehicle Components	EAC		2
Automotive Suppressors : High Frequency Chokes for Wiper motors. Air Bags and Windcreens	EAD		2
Automotive Suppressors: Aline Chokes for Radios, Amplifiers	EAF		4
Automotive Suppressors: Noise Filters for Radios, Amplifiers	EAH		4
Automotive Suppressors: On Board Computer Filters For Protection of and malfunction of On-Board Electronic Equipment including Tracking Devices and Ticket issuing machines	EAG		5
Automotive Suppressors: Sensor Filters Sensors attached to On-Board Electronic Equipment	EAI		5
Mains Filters For the Suppression of A.C. Mains equipment to C.I.S.P.R Standards Introduction and Housings	Page		72
Mains Filters 4 Wire Networks for equipment without an earth 3-5 amps	EMG		7
Mains Filters 5 Wire Networks for earthed equipment. 1 to 25 Amps	EMF		8
Mains Filters High Performance 5 to 30 Amps in Metal Housings	EMH		9
Mains Filters 40 to 100 Amp in Metal Housings	EMI		10
EMI and Radio Interference Testing to C.I.S.P.R Standards	Page		11
EMI and Mains Filter Design Services to C.I.S.,P.R Standards	Page		12
PACKAGING	Page		13
Section 6: Packaging			Page
Packaging	PAC		85



AUTOMOTIVE SUPPRESSORS : CAPACITORS TYPE EAC

[BACK TO INDEX](#)

These consist of various combinations of capacitors in a variety of special designs and housings, providing suppression for all automotive electrical or electronic equipment as shown below. A free booklet on vehicle noise suppression is available, which should assist in the investigation and rectification of vehicle noise from automotive and marine applications

SINGLE CAPACITOR TYPE EAC

Capacitors for use on Alternators , Ignition Coils, Clock and wiper motors. They may also be used with A-Line chokes to form noise filters

Single Capacitor



Fig 1



Application	Description	Code	Housing
Voltage Regulator	2.2 uf Without Terminal	39/262	Fig 1
Ignition Coil, Clock , Fuel Pump, Alternator, Wiper, Ventilator , Fan	2.2 With Quick Connect flag Terminal	39/490	Fig 1
Alternator	2.2 With 8mm Ring Terminal	39/524	Fig 1

DUAL CAPACITOR TYPE EAC

Special Applications whereby two capacitors are required in one housing

Circuit diagram

Dual Capacitor

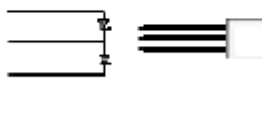
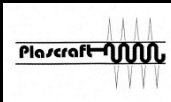


Fig 2





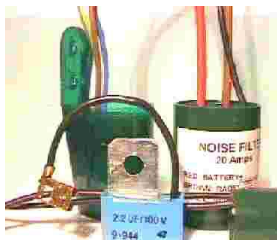
Application	Description	Code	Housing	Dimensions
Special Applications whereby two capacitors are required in one Housing	2.2 uf + 2.2 uf	39/285	I3 Fig 2	OD=27, L=40



AUTOMOTIVE SUPPRESSORS : WIPER CHOKES TYPE EAD See Also Type MHR for More

[BACK TO INDEX](#)

High Frequency Chokes		Application	Description	Code
		For use on Windscreen Wiper Motors and Vehicle equipment causing Interference on FM Bands	20 Amp High Frequency Choke	40/551





AUTOMOTIVE SUPPRESSORS : NOISE FILTERS AND A-LINE CHOKES

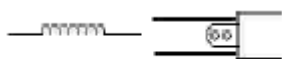
[BACK TO INDEX](#)

These consist of various combinations of capacitors and/or inductors in a variety of special designs and housings, providing suppression for all automotive electrical or electronic equipment as shown below.

A free booklet on vehicle noise suppression is available, which should assist in the investigation and

AUTOMOTIVE SUPPRESSORS : A-LINE CHOKES TYPE EAF

A-line Choke



A-Line chokes for Radios, C.B.s, Cellphones and other vehicle audio equipment

A-Line Chokes Primarily For use in line with the radio or Amplifier but can be used with the Single Capacitor

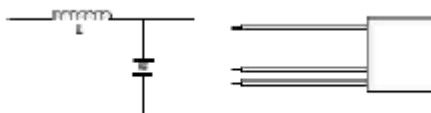
Rating amps	Code	Inductance MH	Housing
5	39/203	6	B2
10	39/202	3.25	B2
15	39/201	1.4	B2
20	39/923	1.4	I3
30	39/924	0.8	I3

AUTOMOTIVE SUPPRESSORS : NOISE FILTERS TYPE EAH



Noise Filters For High Power Amplifiers

Current	Housing	Code
10 Amps	I4	39/614
20 Amps	I4	39/532
30 Amps	I4	39/615





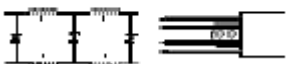
AUTOMOTIVE SUPPRESSORS: FOR PROTECTION OF ON-BOARD ELECTRONIC EQUIPMENT TYPES EAG/EAJ

[BACK TO INDEX](#)

These consist of various combinations of capacitors and/or inductors in a variety of special designs and housings, providing suppression for all automotive electrical or electronic equipment as shown below. A free booklet on vehicle noise suppression is available, which should assist in the investigation and rectification of vehicle noise from automotive and marine applications

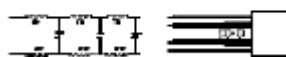
AUTOMOTIVE SUPPRESSORS : ON BOARD COMPUTER FILTERS TYPE EAG

On board Computers



Application	Description	Housing	Stock Code
For use on on-board motor vehicle computers, equipment containing sensitive Electronic circuits. NOTE: The equipment should not be earthed for these filters	3 Amp Double Pi Network	B2	39/335
	6 Amp Double Pi Network	B2	39/356

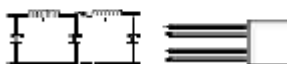
On board Computers



Application	Description	Housing	Stock Code
For use on on-board motor vehicle computers, equipment containing sensitive Electronic circuits. NOTE: The equipment should not be earthed for these filters to be effective	3 Amp High Frequency Triple Pi Network	B2	39/122
		B2	39/122A

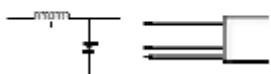
AUTOMOTIVE SUPPRESSORS : SENSOR FILTERS TYPE EAJ

Sensor Filters



Application	Description	Housing	Stock Code
For Sensors such as speed, temperature, pressure etc connected to on board motor vehicle computers	Double Pi Network	I3	39/227

Sensor Filters



Application	Description	Housing	Stock Code
For Sensors such as speed, temperature, pressure etc connected to on board motor vehicle computers	Single L/C Network	I1	39/339



MAINS FILTERS FOR EMI

[BACK TO INDEX](#)

Plascraft Mains Filters are used to suppress radio frequency interference, to S.A.B.S. Standards, stemming from single phase electrical machines and apparatus, up to around 25 Amperes.

SELECTION: This is normally based on the following parameters

- a) Voltage, operating current and mains frequency.
- b) Leakage current limits.
- c) R.F.Characteristics of interference source and R.F.Interference Level required.
- d) Mechanical details of the mains filter.

CONSTRUCTION:

These units are designed around selected inductors together with appropriate X and Y capacitors and other components as necessary. They are housed in cylindrical plastic containers as per Identification Table as shown below.

HOUSINGS

I 1 	I 3
B 2 	4 4 - 7 6
3 7 - 7 5 	4 8 - 9 1
3 1 - 3 7 Unpotted With Lid 	Metal Box
3 1 - 4 9 	

CONNECTIONS

Are made via 4,5, or 6 flexible leads using the colours shown below as applicable.

Connections from the mains power supply:

Brown = Live

Blue = Neutral

Green and Yellow = Earth

Connections to the equipment.

Red = Live

Black = Neutral

Green = Earth

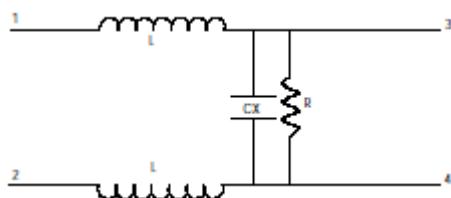




MAINS FILTERS 4 WIRE SINGLE SECTION TYPE EMG

[BACK TO INDEX](#)

For use in equipment that is not earthed



TECHNICAL DATA

Manufacturing Standard

Manufactured to BS613

1: RATED VOLTAGE

250 V.A.C 50/60 Hz

2.:RATED CURRENT

Referred to 50Hz

3: RATED INDUCTANCE

Measured at 1Khz at 25° C



Rated Current Amps	Inductance mh	Housing	X Capacitor	Code	Remarks
3	2x 2.39	B2	0.22	41/370	With Q.C Terminals
5	2x .68	B2	0.47	41/418	
5	2x.27	Sleeved	0.1	41/400	High Frequency Inductors

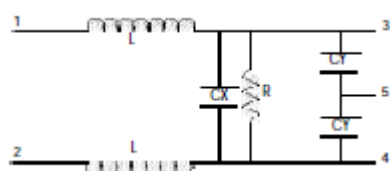


MAINS FILTERS : 5 WIRE SINGLE SECTION TYPE EMF

[BACK TO INDEX](#)

These are used for normal suppression of equipment incorporating contacts, brush motors, power controls, electronic switches etc. NB. As with all filters incorporating an earth wire, the maximum earth leakage current permitted must be taken into account.

5 Wire with Two "Y" Capacitors



TECHNICAL DATA

Manufacturing Standard
Manufactured to BS613

1: RATED VOLTAGE

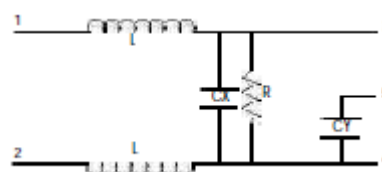
250 V.A.C 50/60 Hz

2.:RATED CURRENT

Referred to 50Hz



5 Wire with One "Y" Capacitors



Rated Current Amps	Inductance m.h	Housing	X Cap	Y Cap	Earth Leakage m.a	Code	Remarks
1	13	B2	0.47	2x 0.0047	0.35	41/388	For Switch Mode Power Supplies
1	13	B2	0.22	1x 0.0047	0.35	41/269	
3	.587	I1	0.1	1x 0.0047	0.35	41/236	Without Resistor
3	2.39	I3	0.1	2x 0.0047	0.35	41/290	
3	2.39	B2	0.22	1x 0.01	0.75	41/234	
3	2.39	B2	0.47	1x 0.01	0.75	41/246	
5	0.68	B2	0.33	1x0.0047	0.35	41/137	
5	0.68	B2	0.33	1x0.01	0.75	41/150	
6	0.68	B2	0.22	1x0.01	0.75	41/147	
6	1.5	RS1 31-49	0.1	2x 0.0033	0.25	41/612	
6	1.5	RS1 31-37	0.22	2x 0.0033	0.25	41/461	With Q.C Terminals and Ring Terminal
10	1.247	RS2 44-76	0.47	1x 0.01	0.75	41/252	For Ridge Power Tools
13.5	1.086	RS2 44-76	0.33	1x 0.01	0.75	41/152	
16	0.67	Rs3 48-91	0.47	2x 0.022	1.7	41/334	
20	4.0	RS3 48-91	0.33	2x 0.033	2.5	41/579	Very High Attenuation High Performance Filter.
25	0.448	RS3 48-91	2x 1.0	2x 0.022	1.7	41/374	5 Wire with 2 of X Capacitors
25	0.448	RS3 48-91	2x 1.0	2 x 0.022	1.7	41/374A	Different Wire Lengths



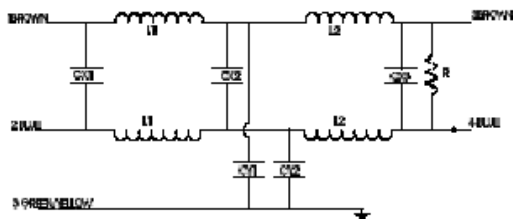
MAINS FILTERS : 5 WIRE HIGH PERFORMANCE TYPE EMH

[BACK TO INDEX](#)

These are used for high performance suppression of equipment incorporating contacts, brush motors, power controls, electronic switches etc. NB.As with all filters incorporating an earth wire, the maximum earth leakage current permitted must be taken into account.

Due to the double section network , as well as the use of double separated metal case housing this unit has a wide band attenuation for Radio frequencies.

These filters are well suited for incorporation into plug in type surge protection units with single or multiple outlets with the addition of suitable series or parallel connected surge protection units due to the fact that they may then be able to be replaced without replacing the mains filter



TECHNICAL DATA

Manufacturing Standard

Manufactured to BS613

1: RATED VOLTAGE

250 V.A.C 50/60 Hz

2.:RATED CURRENT

Referred to 50Hz

3: RATED INDUCTANCE

Measured at 1Khz at 25° C

DIMENSIONS

Rated Current Amps	L	W	H	T	F	Housing	Stock Code
5	82	73	29	53	9	MB1	41/100
10	101	77	31	58	9	MB2	41/101
15	101	77	31	58	9	MB2	41/512
20	101	77	31	58	9	MB2	41/102
25	116	77	37	62.5	9	MB3	41/103
30	116	77	37	62.5	9	MB3	41/104



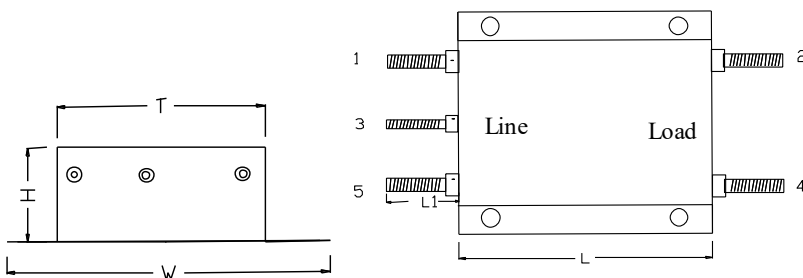
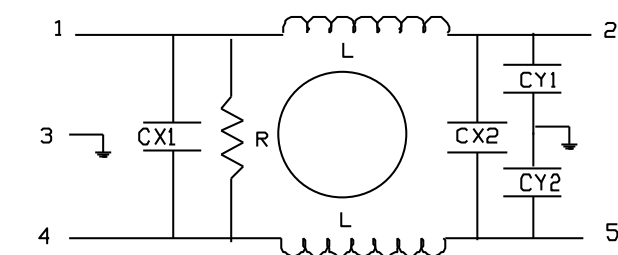
MAINS FILTERS : 5 WIRE HIGH CURRENT TYPE EMI

[BACK TO INDEX](#)

These are used for suppression of equipment incorporating contacts, brush motors, power controls, electronic switches etc. NB.As with all filters incorporating an earth wire, the maximum earth leakage current permitted must be taken into account.

They are suitable for high current applications.

These filters are well suited for use with Parallel connected surge protection devices which may be able to be replaced without replacing the mains filter



TECHNICAL DATA

Manufacturing Standard

Manufactured to BS613

1: RATED VOLTAGE

250 V.A.C 50/60 Hz

2.:RATED CURRENT

Referred to 50Hz

3: RATED INDUCTANCE

Measured at 1Khz at 25° C

DIMENSIONS

Rated Current Amps	L	W	H	T	F	Bolts	Hous- ing	Stock Code
40	113	76	35	62	9	M6	MB3	41/105
60	120	10	50	100	15	M8	MB4	41/106



[EMI AND RADIO INTERFERENCE TESTING TO C.I.S.P.R SERVICE ERI](#)

[BACK TO INDEX](#)

EMI SERVICES . A Schwarzbeck Quasi-Peak EMI Measurement set-up is available and EMI measurement from 150Khz to 300 Mhz is available. This facility is available to Customers and Engineers to assist in obtaining compliance with local and International EMI requirements on their equipment. Measurement can be done on 250VAC single phase apparatus up to 20 Amps. Plascraft Personnel have over 30 years experience in this field and have provided solutions to the Appliance, Automotive, Electronic equipment, Dimmers, Lighting ,Medical, Marine, TV , and Audio Industries. An extensive technical publication and information guideline is provided in the Plascraft EMI SOLUTIONS Catalogue





EMI AND MAINS FILTER DESIGN SERVICES ESS

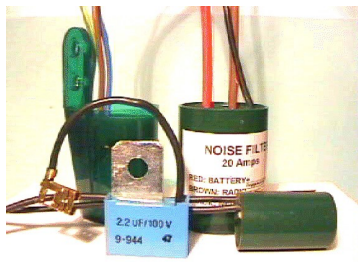
[BACK TO INDEX](#)

Plascraft personnel have been providing EMI Solutions as well as EMI Filters and Suppression Components in the Selby and Booyses Facilities in Johannesburg since 1973, as a result of the Introduction of TV in South Africa and the ensuing EMI Regulations. To date well over 20 Million of these units have been produced using Locally Manufactured Capacitors and Inductors. An EMI measurement facility has been established to measure to C.I.S.P.R Standards.

Measurements are done from 150 KHz to 30 Mhz using a L.I.S.N and From 30 to 300 Mhz using an MDS clamp.

EMI Products are produced to IEC Standards.

These designs and components have provided turnkey solutions for our Customers to enhance their product's functionality, safety and the environmental harmony of electronic products used in domestic, marine, military, industrial and automotive sectors.



AUTOMOTIVE SUPPRESSORS AND NOISE FILTERS These components are used to prevent interference from automotive engines and accessories from affecting Radios, On-board Computer equipment, High Performance Car Sound Systems and any other electronic equipment installed in motor vehicles. Noise Filters and A-line Chokes are available up to 30 Amps, Automotive Suppression Inductors, filters and Capacitors are available in a large variety of configurations. A technical document on vehicle noise suppression is available in the Plascraft EMI SOLUTIONS Catalogue.



MAINS FILTERS. These units are used to suppress electrical equipment that generate Electro Magnetic Interference. Selection of the correct units allow the equipment to comply with the C.I.S.P.R Standards. They are available in Metal Box and Plastic Housing Construction with a variety of Circuit configurations and terminations. Rated at 250 Volt AC and in Current Ratings up to 25 Amps. EMI Attenuation in 3 performance Levels are available.

CAPACITOR NETWORKS are used for EMI Suppression where low noise levels are generated.. They are available in Plastic Box Construction with Flexible Leads. Operating Voltage is 250VAC. A variety of Terminals are available for connection to equipment and Self healing, X Type and Y Type Safety Capacitors are used for additional safety and performance.





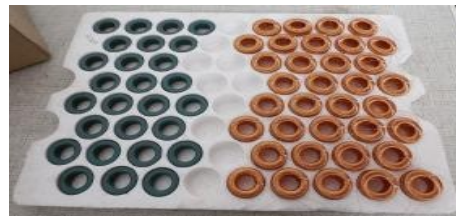
PACKAGING

PAC

[BACK TO INDEX](#)



Polybag Packaging.



Polystyrene Packaging



Display Packaging.
Product can be individually packed
In Polybags with a label
for display



Carton 1 Size 23x15x15cm ,5175cu cm ,193 cartons cu. metre
Carton 2 Size 25x15x25,9375cu. Cm , Max weight 18Kgs
Carton 3 Size 30x21x28, 17640cu.cm. Max weight 18Kgs

Carton Identification.

Plascraft

Customer Name and Address

(If Contents are 1 Item)

Product Type

Stock Code

Product Description .

Quantity.

(If Contents contain more than 1 Item)

Plascraft

Customer Name and Address

Bag Identification

Plascraft. 011-4937782

Product Type

Stock Code

Product Description

Capacitors: Capacitor Type, Value,
Voltage, Tolerance, Lead Spacing

Inductors: Inductance, Current Rating,
Voltage